

# BE WITH ME

Music and Lyrics by: Brian G. O'Connor  
LWCD-1187

## Intro - Guitar

C D G G D

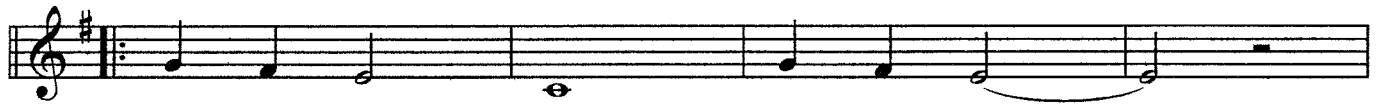


C C D G/D



## Chorus

G mi D C C/G G mi D C C/G



1: Be with me Lord In my soul \_\_\_\_\_  
2: Show me light Lord With your love \_\_\_\_\_  
3 (D.S.): Keep us safe Lord In the night \_\_\_\_\_

G mi D C C G G D

To Coda (3rd time)



Touch my heart Lord Now and \_\_\_\_\_ for - ev - er more \_\_\_\_\_  
Give me strength Lord To face the troubled world \_\_\_\_\_  
Be with us Lord Till the morn - ing light \_\_\_\_\_

C D G G D



C/G C D G



22  $Dmi^7$   $G$   $E^7sus$   
Life goes fast

26  $Dmi^7$   $E^7sus$   $G$   $G/D$   
Things don't last

30  $Dmi^7$   $G$   $E^7sus$   
Fall - ing fast

34  $Dmi^7$   $E^7sus$   $G$   $G/D$   
Bring God back

37  $Bbsus^2$   $Dmi^7$   $Csus^2$   $G$

41  $Dsus^2$   $E^7sus$   $D$   $D/A$

45  $D$   $D/A$  D.S. al Coda

BE WITH ME - p. 3

Coda

47

C D G G D

This block contains the Coda section, measures 47 through 50. It is written in treble clef with a key signature of one sharp (F#) and a 4/4 time signature. Measure 47 begins with a C-clef and a common time signature (C). The notes are: C4 (quarter), D4 (quarter), E4 (quarter), F#4 (quarter), G4 (quarter), A4 (quarter), B4 (quarter), C5 (quarter). Measure 48: C4 (quarter), D4 (quarter), E4 (quarter), F#4 (quarter), G4 (quarter), A4 (quarter), B4 (quarter), C5 (quarter). Measure 49: C4 (quarter), D4 (quarter), E4 (quarter), F#4 (quarter), G4 (quarter), A4 (quarter), B4 (quarter), C5 (quarter). Measure 50: C4 (quarter), D4 (quarter), E4 (quarter), F#4 (quarter), G4 (quarter), A4 (quarter), B4 (quarter), C5 (quarter). Chord symbols C, D, G, G, and D are placed above the staff at the beginning of measures 47, 48, 49, 50, and 51 respectively.

C C D G

This block contains measures 50 through 53. The notation continues from the previous block. Measure 50: C4 (quarter), D4 (quarter), E4 (quarter), F#4 (quarter), G4 (quarter), A4 (quarter), B4 (quarter), C5 (quarter). Measure 51: C4 (quarter), D4 (quarter), E4 (quarter), F#4 (quarter), G4 (quarter), A4 (quarter), B4 (quarter), C5 (quarter). Measure 52: C4 (quarter), D4 (quarter), E4 (quarter), F#4 (quarter), G4 (quarter), A4 (quarter), B4 (quarter), C5 (quarter). Measure 53: C4 (quarter), D4 (quarter), E4 (quarter), F#4 (quarter), G4 (quarter), A4 (quarter), B4 (quarter), C5 (quarter). Chord symbols C, C, D, and G are placed above the staff at the beginning of measures 50, 51, 52, and 53 respectively.

Bass and Drums Only

C D F G C D F G

54

This block contains measures 54 through 56. It is written in bass clef with a key signature of one sharp (F#). Measure 54: C3 (quarter), D3 (quarter), E3 (quarter), F3 (quarter), G3 (quarter), A3 (quarter), B3 (quarter), C4 (quarter). Measure 55: C3 (quarter), D3 (quarter), E3 (quarter), F3 (quarter), G3 (quarter), A3 (quarter), B3 (quarter), C4 (quarter). Measure 56: C3 (quarter), D3 (quarter), E3 (quarter), F3 (quarter), G3 (quarter), A3 (quarter), B3 (quarter), C4 (quarter). Chord symbols C, D, F, G, C, D, F, and G are placed above the staff at the beginning of measures 54, 55, 56, 57, 58, 59, 60, and 61 respectively.

G C D C

57

This block contains measures 57 through 60. Measure 57: C3 (quarter), D3 (quarter), E3 (quarter), F3 (quarter), G3 (quarter), A3 (quarter), B3 (quarter), C4 (quarter). Measure 58: C3 (quarter), D3 (quarter), E3 (quarter), F3 (quarter), G3 (quarter), A3 (quarter), B3 (quarter), C4 (quarter). Measure 59: C3 (quarter), D3 (quarter), E3 (quarter), F3 (quarter), G3 (quarter), A3 (quarter), B3 (quarter), C4 (quarter). Measure 60: C3 (quarter), D3 (quarter), E3 (quarter), F3 (quarter), G3 (quarter), A3 (quarter), B3 (quarter), C4 (quarter). Chord symbols G, C, D, and C are placed above the staff at the beginning of measures 57, 58, 59, and 60 respectively.